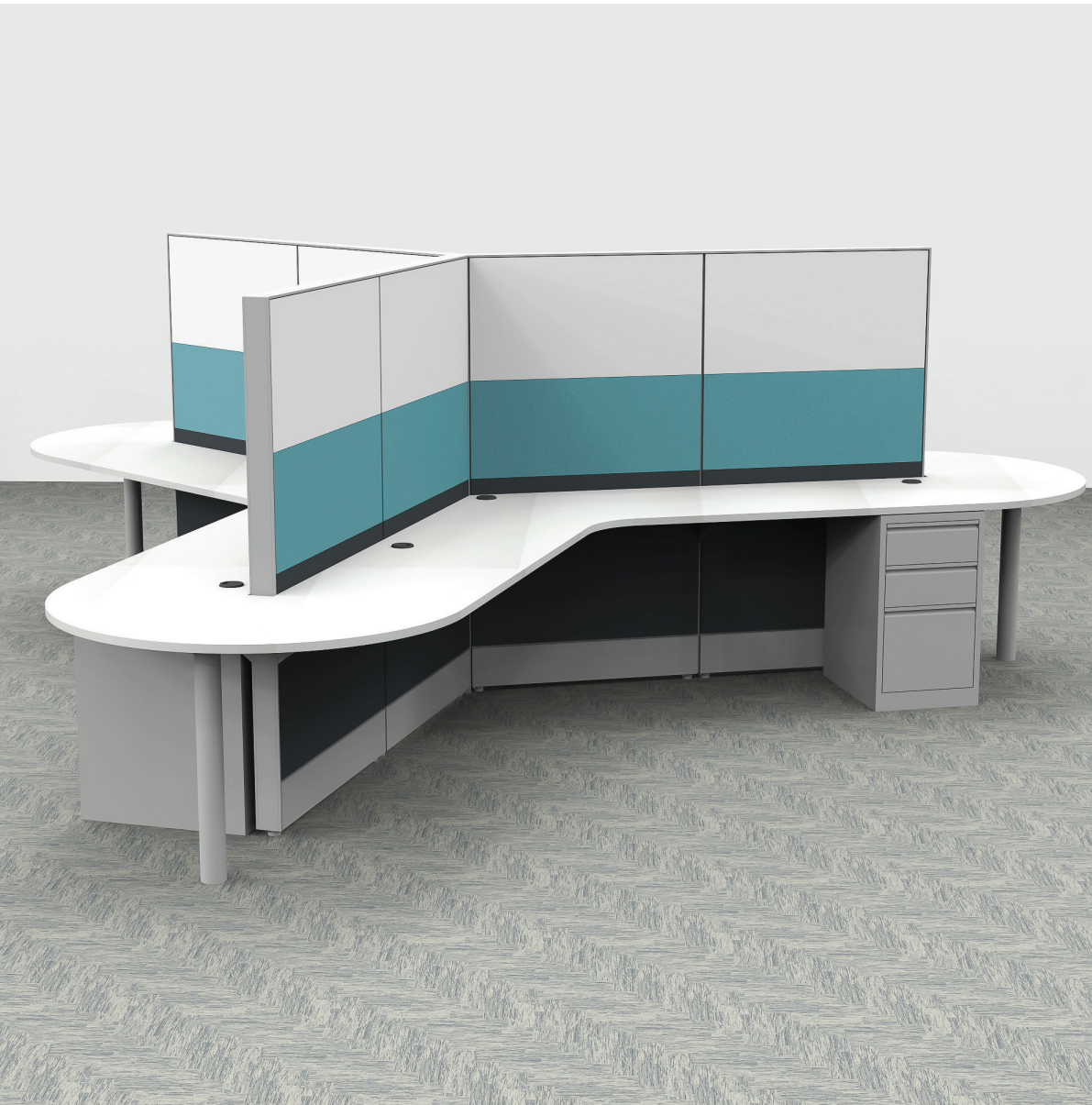
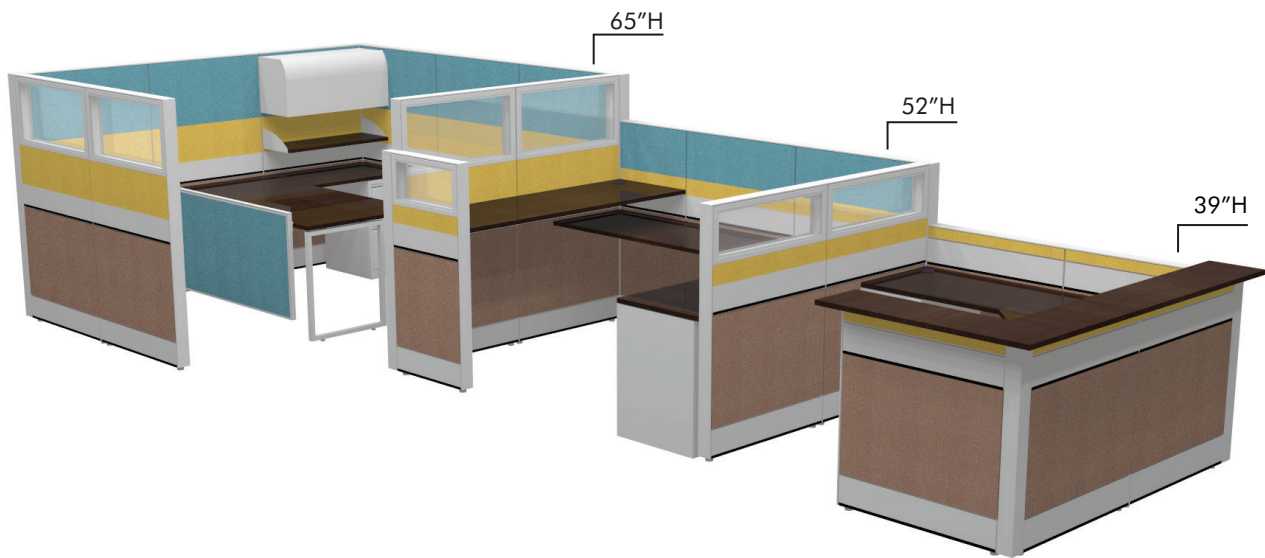


SAPPHIRE CUBICLE SYSTEM



888-993-3757
SKUTCHI.COM



SAPPHIRE CUBICLE SYSTEM

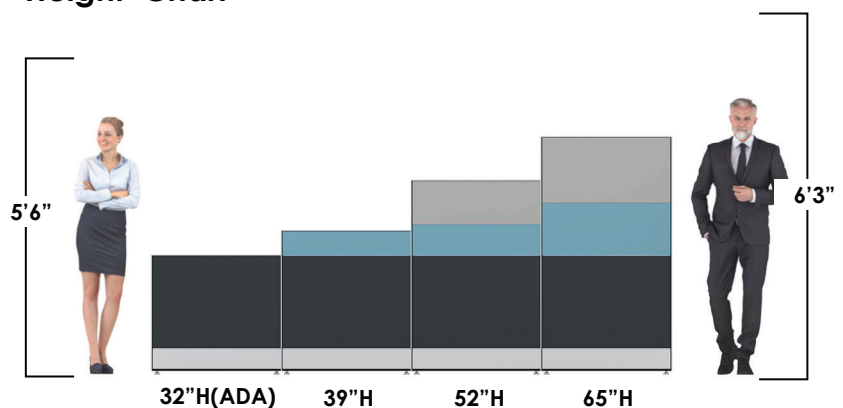
The Sapphire Cubicle System by SKUTCHI Designs Inc. ® is an inspired and elegant cubicle solution for office spaces and work environments of all shapes and sizes. Whether you're looking to create individually furnished cubicle workspaces for 3 people or 300, the Sapphire Cubicle System allows scalable, interconnected workstations which are both modular and allow for near limitless customization. The Sapphire Cubicle System frames are constructed from incredibly strong yet, extremely lightweight, commercial-grade aluminum frames. These frames, along with distinctly shaped frame connectors create virtually unlimited and uniquely shaped wall structures. If cubicle spaces require electrical outlets or data network cable, the Sapphire Cubicle System frames offers built-in "raceways" to provide hidden and seamless electric and data integration. The panel thickness is 3 1/4" with available finishes of fabric, laminate, or tempered glass panels reaching 39", 52", or 65" in height (customer heights available upon request). Fabric panels offer 14 different colors, laminate panels have 4 different surface textures, and the tempered glass panels can either be clear or choose from 8 different film appliques to enhance privacy or add distinctive flair. The Sapphire Cubicle System offers more than just walls and panels. Choose from an enormous inventory of ergonomically designed furniture and accessories such as workstation desktops, sit-to-stand desks, locking file storage cabinets, scalable shelving, locking overhead storage containers, padded-top sit and storage benches, paper racks, bookshelves, and accessory rails.

In short, the Sapphire Cubicle System is an "all-in-one" solution for businesses of all sizes. It allows you to create cubicle walls up to 65" in height as well as furnish those areas with compatible office furniture and accessories. If cubicle walls are needed which exceed 65" in height, or require locking doors, be sure to check out our Sapphire Wall System catalog.

Since the form and function of the Sapphire Cubicle System is modular in its design, it can be expanded out, combined with, moved around, replaced, demounted, and have its furniture exchanged between cubicles if ever needed. All materials used with the Sapphire Cubicle System meet or exceed the safety and durability specifications set forth by the American National Standards Institute and the Business and Institutional Furniture Manufacturers Association.

- 6" cable channel on the base of each panel, beltline available upon request
- Panel thickness: 3 1/4"
- Glass thickness: 3/8"
- Frames & connections: Aluminum
- Optional interior furnishings available
- Custom and quick-ship options available
- ANSI/BIFMA
- Fabric ISO 9001
- Electric: UL Listed

Height Chart

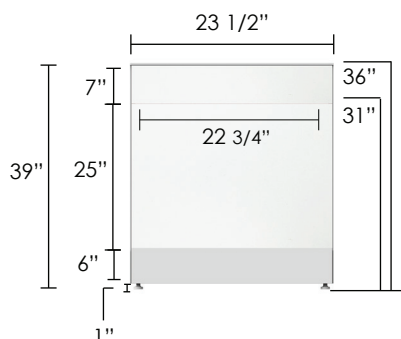


Panel Measurements

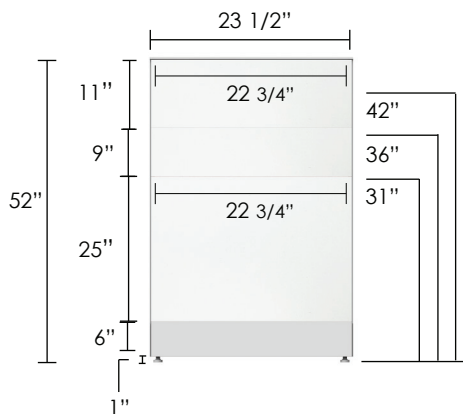
Panels with Single Raceway

Panel Thickness: 3 1/4"

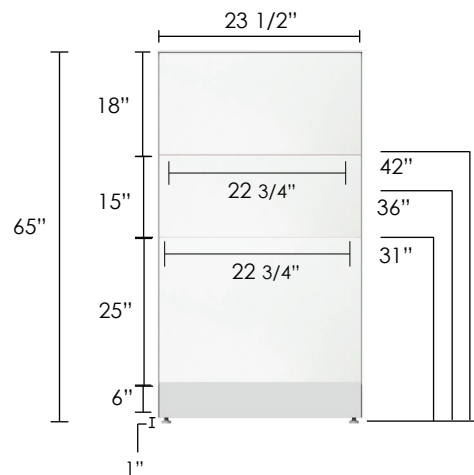
39"H Solid Panels



52"H Solid Panels

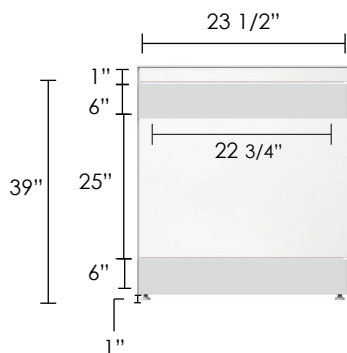


65"H Solid Panels

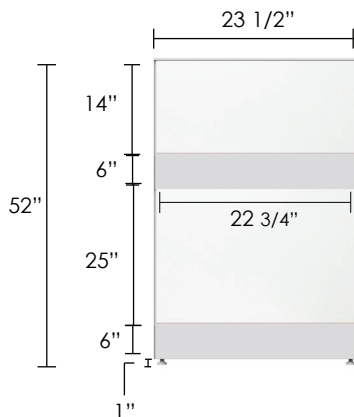


Panels with Double Raceway (custom option)

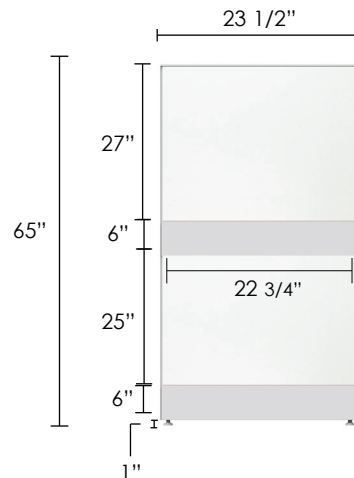
39"H Solid Panels



52"H Solid Panels





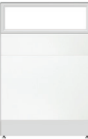
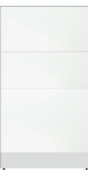
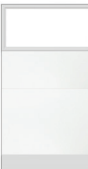
65"H Solid Panels



Custom cubicle (standard is W/O second raceway)

39"H-65"H Panels

Listed below is the panel information for 39-65"H panels. Panels are priced with tiles included.


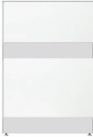



	Description	SKU	Dimensions	Weight
	S39S-SR	SAP-2439S	24"W x 39"H	42 lb
		SAP-3639S	36"W x 39"H	60 lb
	S52S-SR	SAP-2452S	24"W x 52"H	42 lb
		SAP-3652S	36"W x 52"H	60 lb
	S52G-SR	SAP-2452G	24"W x 52"H	45 lb
		SAP-3652G	36"W x 52"H	62 lb
	S65S-SR	SAP-2465S	24"W x 65"H	50 lb
		SAP-3665S	36"W x 65"H	73 lb
	S65G-SR	SAP-2465G	24"W x 65"H	56 lb
		SAP-3665G	36"W x 65"H	84 lb



*Glass thickness: 3/8"

39"H-65"H Panels with Double Raceway (custom option)

Listed below is the panel information for 39-65"H panels with a second raceway at the bellline of the panel.
Panels are priced with tiles included

	Description	SKU	Dimensions	Weight
	S39S-DR	SAP-2439S-DR	24"W x 39"H	42 lb
		SAP-3639S-DR	36"W x 39"H	60 lb
	S52S-DR	SAP-2452S-DR	24"W x 52"H	42 lb
		SAP-3652S-DR	36"W x 52"H	60 lb
	S52G-DR	SAP-2452G-DR	24"W x 52"H	45 lb
		SAP-3652G-DR	36"W x 52"H	62 lb
	S65S-DR	SAP-2465S-DR	24"W x 65"H	50 lb
		SAP-3665S-DR	36"W x 65"H	73 lb
	S65G-DR	SAP-2465G-DR	24"W x 65"H	56 lb
		SAP-3665G-DR	36"W x 65"H	84 lb

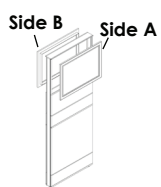


Decorative Film For Glass Panels

Choose a decorative film for any of the glass tops in the Sapphire Cubicle System to enhance the overall look even further.

Option 1: Single Side Glass Tile

Option 2: Double Side Glass Tile

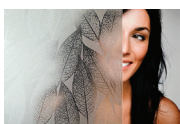


Description	SKU	Dimensions
One sided film	SS-FILM-25	up to 25"H
Two sided film	DS-FILM-25	up to 25"H

*Film can be placed on one or both sides of glass

Film Styles

*Films provided by Decorative Films



Frosted Leaf



Ice Forest
Static Cling



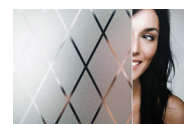
Clear Waters
Horizontal



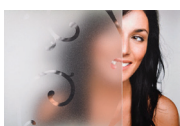
Filigree Static
Cling



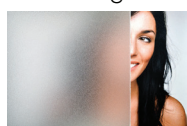
Asher



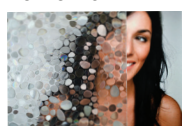
Crystal Lattice



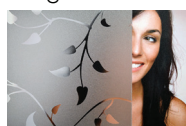
Frosted Vine
Static Cling



Sand Static Cling



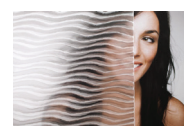
Stones Static Cling



Frosted Fall
Static Cling



Flicker



Mystic

Accessories

Add any of these accessories to your space to make the work day more convenient



Description	SKU	Dimensions	Weight
Pencil Holder	EPH	—	1 lb



Paper Rack	EFT	—	1 lb
------------	-----	---	------



Accessory Rail	SAP-24-AR	24"W	2 lb
	SAP-36-AR	36"W	2 lb



Accessory Bundle	SAP-24-BUNDLE	24"W	4 lb
Accessory rail with paper tray and pencil holder	SAP-36-BUNDLE	36"W	



Task Lights	235799-1-BS	24"W	10 lb
	235799-2-BS	36"W	10 lb





Worksurfaces

Worksurfaces can be customized with any of our laminate finishes.

	Description	SKU	Dimensions	Weight
	Straight Worksurfaces	2424-NWS-CCODE	24"W x 24"D	13 lb
		3624-NWS-CCODE	36"W x 24"D	20 lb
		4824-NWS-CCODE	48"W x 24"D	27 lb
		6024-NWS-CCODE	60"W x 24"D	32 lb
		7024-NWS-CCODE	70"W x 24"D	39 lb
		7224-NWS-CCODE	72"W x 36"D	57 lb
	Corner Worksurface	CORNER-WWS-CCODE	35 5/8"W x 23 5/8"D x 23 5/8"W	28 lb
	Custom	3048-CUS-CCODE	30"W x 48"D	49 lb
		3060-CUS-CCODE	30"W x 60"D	49 lb
		3072-CUS-CCODE	30"W x 72"D	49 lb
		4896-CUS-CCODE	48"W x 96"D	100 lb
	120 Degree Worksurface	2436-V-CCODE	35 5/8"W x 35 5/8"W x 23 5/8"D	32 lb
		2448-V-CCODE	47 5/8"W x 47 5/8"W x 23 5/8"D	45 lb

When ordering, please specify desired color code at the end of the sku.

Laminate Color	CCODE
GRAY/WHITE	GW
SEA SALT/BLACK OAK	SSBO
DRIFTWOOD/MAPLE	DM

See pg. 13 to view laminate finishes.

Worksurface Support

Parts needed to support the worksurfaces

	Description	SKU	Dimensions	Weight
	Corner Worksurface Support	SAP-CC	3 1/4" D x 3" H (toothed side 1" W)	2 lb
	Right Cantilver	SAP-RT	2" W x 18" D x 8" H	3 lb
	Left Cantilver	SAP-LC	2" W x 18" D x 8" H	3 lb
	Double Cantilver	SAP-DC	3 1/4" W x 18" D x 8" H	3 lb
	Flat Bracket	FB	2" W x 6" D	1 lb
	Transaction Support/ Counter Top Bracket (Set of 4)	E-TB	2 3/4" H x 2 5/8" D Top: 2" W x 1 1/8" D Toothed Side: 2 1/2" H x 1 1/8" D	1 lb

Footprints

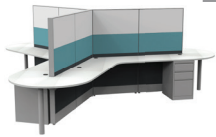
Below are example footprints of the Sapphire Cubicle System. The prices are for the layout as shown.



Description	SKU	Dimensions	Weight
4x4x52 Footprint	SAPTYP-120-4x4x52-G-1019	4'W x 4'D x 52"H	701 lb



Description	SKU	Dimensions	Weight
6x6x65 Footprint	SAPTYP-120-6x6x65-52-G-1019	6'W X 6'D x 65"H	980 lb



Description	SKU	Dimensions	Weight
8x8x65 Footprint	SAPTYP-120-8x8x65-S-1019	8'W x 8'D x 65"H	1115 lb



Description	SKU	Dimensions	Weight
6x6x52 Footprint	SAPTYP-LC50-6x6x52-G-1019	6'W x 6'D x 52"H	812 lb

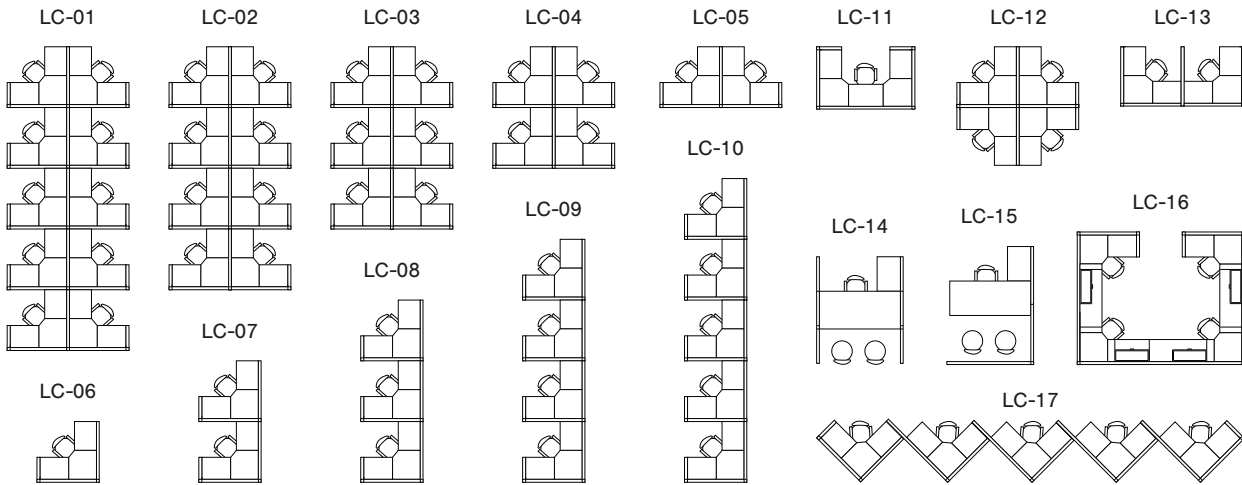


Description	SKU	Dimensions	Weight
6x6x65 Footprint	SAPTYP-LC06-6x6x65-G-1019	6'W x 6'D x 65"H	524 lb

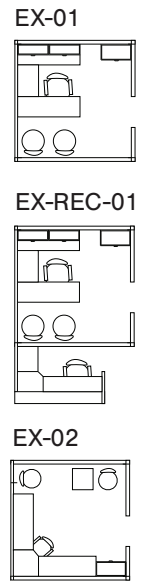
Cubicle Layouts

Additional layout options for the Sapphire Cubicle System

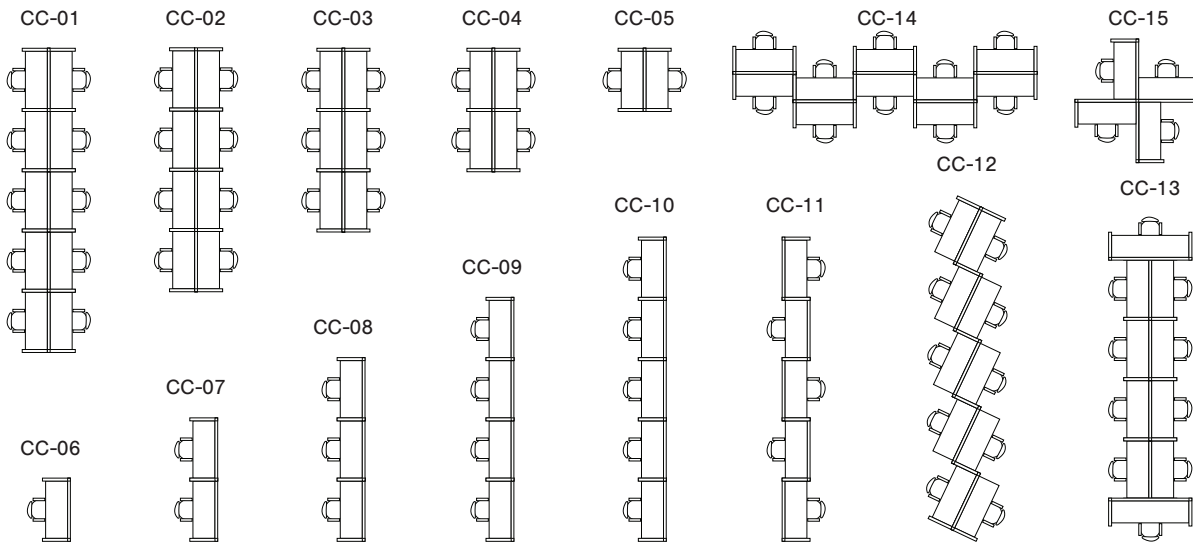
Customer Service



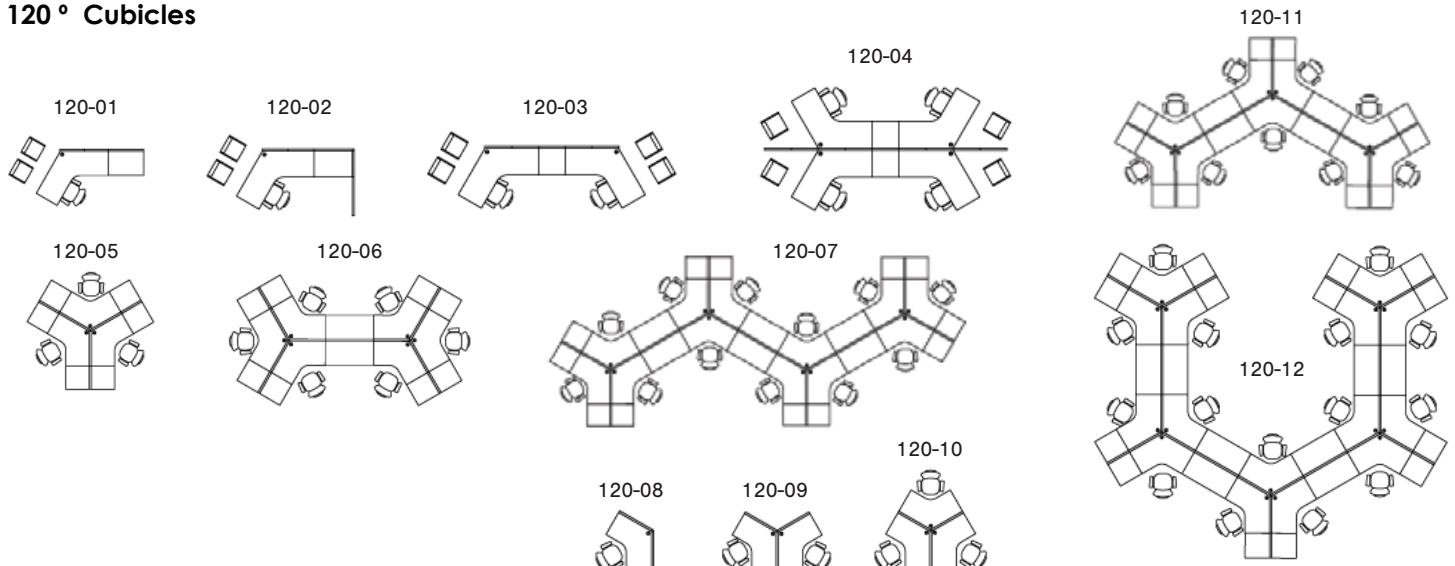
Executive



Call Center









120 ° Cubicles








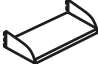

Support

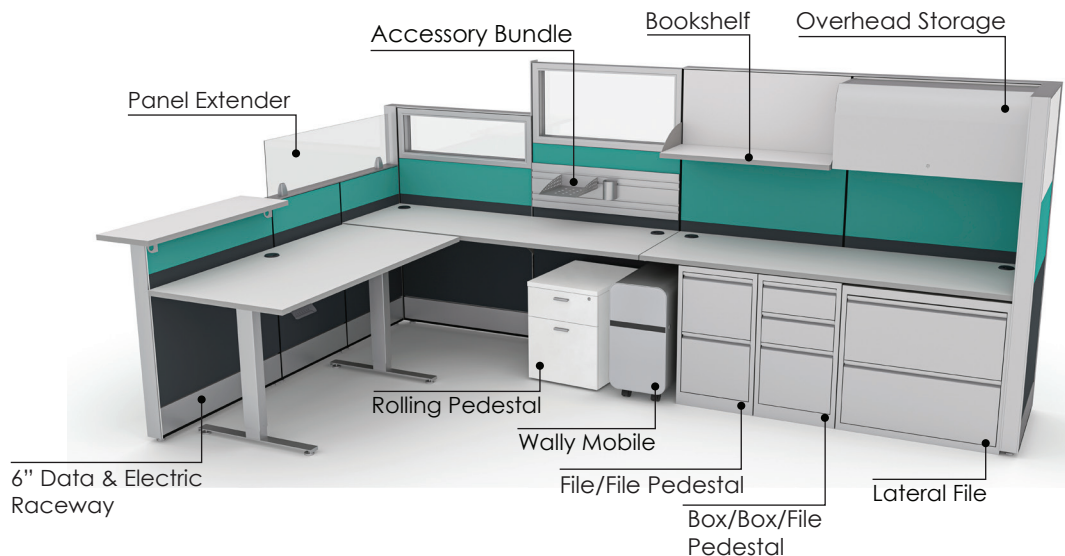
Support options for system and workspaces

	Description	SKU	Dimensions	Weight
	Panel Support without Casters	PSL	1 3/4" W x 16 1/2" D x 7 1/2" H	3 lb
	Panel Support with Casters	PSL-CAST	1 3/4" W x 16 1/2" D x 8 1/2" H	4 lb
	Round Leg	RBL	8" Diameter x 6" H	1 lb
	Metal C-Leg with Wire Management	C-LEG	25 1/4" W x 2 3/4" D x 28" H	11 lb
	Box Leg	BOX-LEG	23 1/2" W x 1 1/2" D x 28" H	13 lb
	Standing Height Box Leg	BOX-LEG-SH	23 1/2" W x 40 1/4" H	12 lb

Storage

Keep your space organized with the help of these storage options.

	Description	SKU	Dimensions	Weight
	Box/Box/File Pedestal	BBF-F-CHAR	15 7/8"W x 19 11/16"D x 29" 1/2"H	54 lb
	File/File Pedestal	FF-F-CHAR	15 7/8"W x 22"D x 27 1/2"H	54 lb
	30" 2 Drawer Lateral File Pedestal	LAT-F-CHAR	30" 2 Drawer Lateral File Pedestal	75 lb
	Box/File Rolling Pedestal with Cushions	DIA-LMP-CUSH	20"D x 15"W x 23 1/2"H	28 lb
	Wally Mobile Storage	UN-WALLY	19 1/2"L x 12 3/16"W x 20 1/8"H	--
	Bookshelf Available in 24"W & 36"W	SAP-36-BS-W SAP-24-BS-W	24"W x 12.5"D 36"W x 12.5"D	7 lb 11 lb
	Locking Overhead Available in 24"W & 36"W	EOC-24 EOC-36	24"W x 12"D x 12"H 36"W x 12"D x 12"H	38 lb 47 lb



eSCAPE Tackboards made from PET material

Available as an add on in the 52"H and 65"H Panels only!



Shown in solid 65"H panel

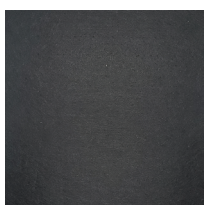


Shown in glass 52"H panel

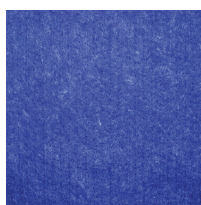


Shown in glass 65"H panel

eSCAPE Color Options



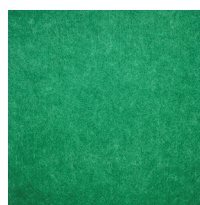
Black
AC-44



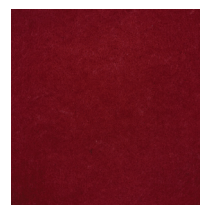
Blue
AC-37



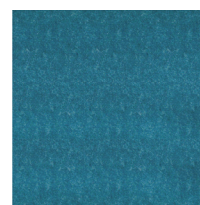
Dark Blue
AC-43



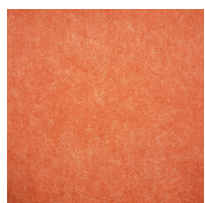
Emerald Green
AC-14



Red
AC-17



Ocean
AC-53



Orange
AC-32



Orange Yellow
AC-23



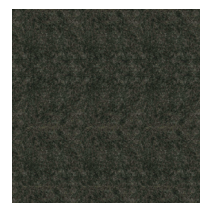
Purple
AC-36



Sand Dune
AC-05



Green
AC-25



Coffee
AC-40



Sesame Black
AC-12



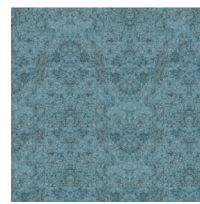
Sky Blue
AC-07



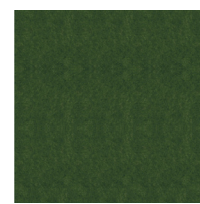
Silver Gray
AC-10



White
AC-04







Peacock
AC-58



Seaweed
AC-65

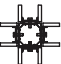





Installation Parts

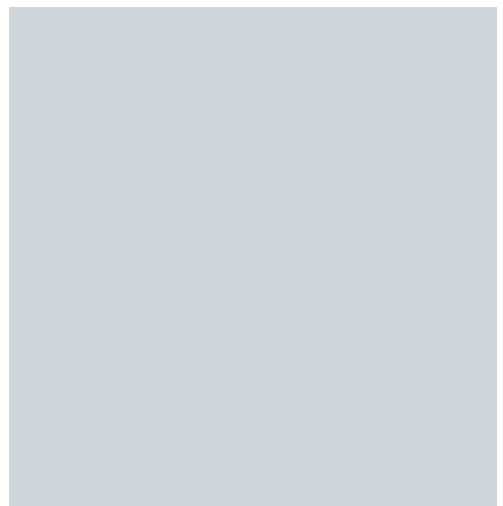
Parts needed and used for installation of the Sapphire Cubicle System.

	Description	SKU	Dimensions	Weight
	Hex Bolts	HEX	—	1 lb
	Sheet Metal Screws	SMSCR	—	1 lb
	Light Blocker (Small/Large)	SAP-LT-SMALL-BLK SAP-LT-LG-BLK	—	1 lb
	End Trim	SAP-52-ET SAP-65-ET	52" 65"	2 lb 2 lb

Connectors




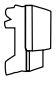








Connectors are needed to connect each panel to the next.

	Description	SKU	Dimensions	Weight
	4 Way Connector	SAP-39-4WAY SAP-52-4WAY SAP-65-4WAY	39" 4-Way Connector 52" 4-Way Connector 65" 4-Way Connector	6 lb
	3 Way Connector	SAP-39-3WAY SAP-52-3WAY SAP-65-3WAY	39" 3-Way Connector 52" 3-Way Connector 65" 3-Way Connector	6 lb
	2 Way Connector	SAP-39-2WAY SAP-52-2WAY SAP-65-2WAY	39" 2-Way Connector 52" 2-Way Connector 65" 2-Way Connector	6 lb
	Straight Panel to Panel Connector	SAP-39-PP SAP-52-PP SAP-65-PP	39" Panel to Panel Connector 52" Panel to Panel Connector 65" Panel to Panel Connector	6 lb
	120 Degree 2 Way Connector	SAP-39-120-2WAY SAP-52-120-2WAY SAP-65-120-2WAY	39" 120° Connector 52" 120° Connector 65" 120° Connector	6 lb
	120 Degree 3 Way Connector	SAP-39-120-3WAY SAP-52-120-3WAY SAP-65-120-3WAY	39" 120° Connector 52" 120° Connector 65" 120° Connector	6 lb



Electric/Data

Electric and Data can be added to the baseline of each panel using the 6" electric and data raceways.

	Description	SKU	Dimensions	Weight
	38" Flex Cable	31-8W-4C	38"	2 lb
	58" Flex Cable	54-8W-4C	58"	2 lb
	68" Flex Cable	68-8W-4C	68"	3 lb
	NYC Base Power Feed with Junction Box and 60" Whip	8W-4C-BASE	60"	4 lb
	8 Wire, 4 Circuit Double Sided Power Module	8W-4C-DS	—	1 lb
	Black Blank Outlet	BLANK-REC-8W-4C	—	1 lb
	8W-4C 1 Receptacle Circuit	1-REC-8W-4C	—	1 lb
	8W-4C 2 Receptacle Circuit	2-REC-8W-4C	—	1 lb
	8W-4C 4 Receptacle Circuit	4-REC-8W-4C	—	1 lb
	8W-4W Dedicated Orange Circuit	3-REC-8W-4C-ISOLATED	—	1 lb
	Wire Snake	WM-SN	—	1 lb
	Phone Jack	AT34-15	—	1 lb
	CAT 6 Jack	AT66-20	—	1 lb
	Data Blank	AT31-00	—	1 lb
	Filler Cap For Data Plates	FILL-CAP	—	1 lb
	Data Plate	AT4FM	—	1 lb

Sapphire Cubicle System Electric Raceway - Closed



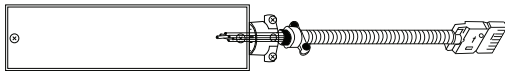
Sapphire Cubicle System Electric Raceway - Open



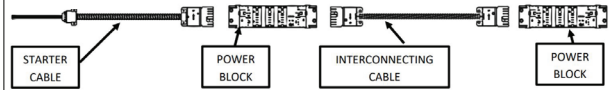


FINAL CONNECTION IS DONE BY A LICENSED ELECTRICIAN

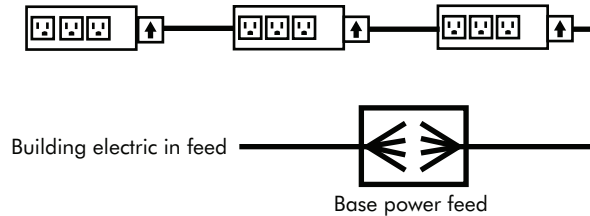
WARNING: Risk of fire or electric shock. As with all non-directional systems, do not electrically connect panel to more than one supply source. Always determine that the panel is electrically connected to one and only one source of supply. Before using any equipment, check the entire system for polarity, continuity, and grounding integrity.



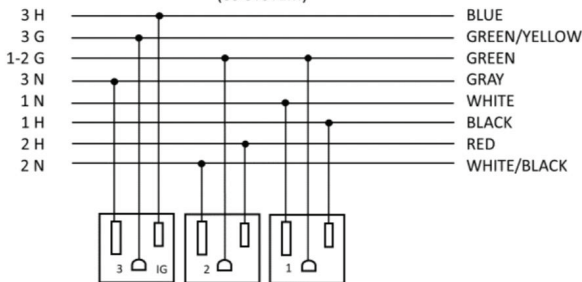
Example System



Click-Latch Device: When installing this system, ensure the connectors have securely clicked into position.



8 WIRE 3 CIRCUIT DIAGRAM
(83 SYSTEM)



Power Supply Connection

The Power System is an eight wire system consisting of four individual circuits rated at 20 amps/120 volts maximum. Circuit 1 (black), circuit 2 (red), and circuit 4 (pink), are served by a system neutral (white) and an equipment ground (green). Circuit 3 (blue) uses an isolated neutral (gray), and an isolated ground (green/yellow). The system may be supplied by a three phase power system with four individual circuits rated 20 amps/120 volts maximum, or as permitted by local code.

When connecting electric pass throughs to power moduls, please make sure ARROW is up

Outlet Layout Options

O1



OUTLET - BLANK - BLANK

O2



OUTLET - OUTLET - BLANK

O3



OUTLET - OUTLET - OUTLET

O4



OUTLET - DEDICATED* - BLANK

O5



OUTLET - DEDICATED* - OUTLET

O6



BLANK - DEDICATED* - BLANK

***PLEASE NOTE:** Orange is used to represent the dedicated outlet. The actual color of the outlet is **black**.

EMERALD Cubicles come with style #225 Outlets.
SAPPHIRE Cubicles come with style #325 Outlets.

DM1



CAT 6 - Blank - Blank - Blank

DM2



CAT 6 - CAT 6 - Blank - Blank

DM3



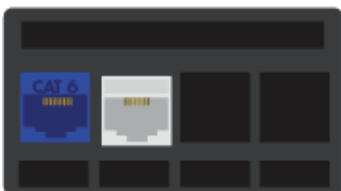
CAT 6 - CAT 6 - CAT 6 - Blank

DM4



CAT 6 - CAT 6 - CAT 6 - CAT 6

DM5



CAT 6 - Phone Jack - Blank - Blank

DM6



CAT 6 - CAT 6 - Phone Jack - Blank

DM7



CAT 6 - CAT 6 - CAT 6 - Phone Jack

All Modules can be customized to customers specifications. Please call to review options with one of our sales representatives. Color of jacks may vary.

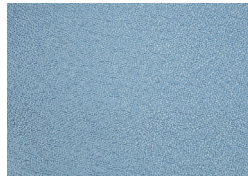
Fabric

Our in house fabric options to customize panels of the Sapphire Cubicle System.

***Please note:** The finish samples below are digital representations. Colors may vary. Please refer to an actual sample before finalizing your selections.



Banana
(15-104)



Blue Lagoon
(15-107)



Toffee
(15-09)



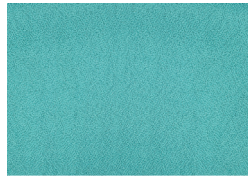
Lime-Green
(15-118)



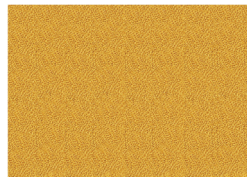
Pumpkin
(15-75F)



Charcoal
(15-13)



Cool Aqua
(15-175)



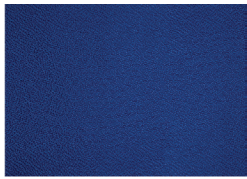
Gold
(15-155)



Midnight Blue
(15-03)



Scarlet
(15-164)



Royal Blue
(15-167)



Sage
(15-103)



Silver
(15-108)



Slate
(15-41)



Caramel
(15-109)

Laminate For Tiles

Laminate options for the tiles of the panels.

***Please note:** The finish samples below are digital representations. Colors may vary. Please refer to an actual sample before finalizing your selections.



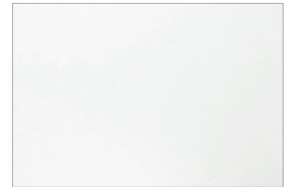
Driftwood



Sea Salt



Black Oak



White

Laminate For Worksurfaces

Laminate options for the worksurfaces.

***Please note:** The finish samples below are digital representations. Colors may vary. Please refer to an actual sample before finalizing your selections.

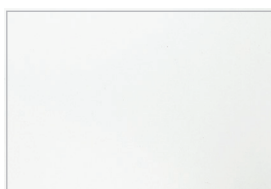
Domestic Laminates



White Cypress



Asian Night



White



Black Cypress



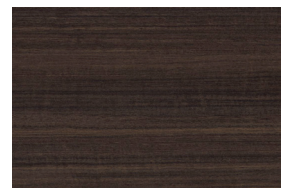
Light Gray



Lakeland Salt



Blonde Surfside Ash



Natural Eucalyptus

Import Laminates



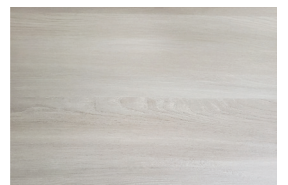
Black Oak



Driftwood



Maple

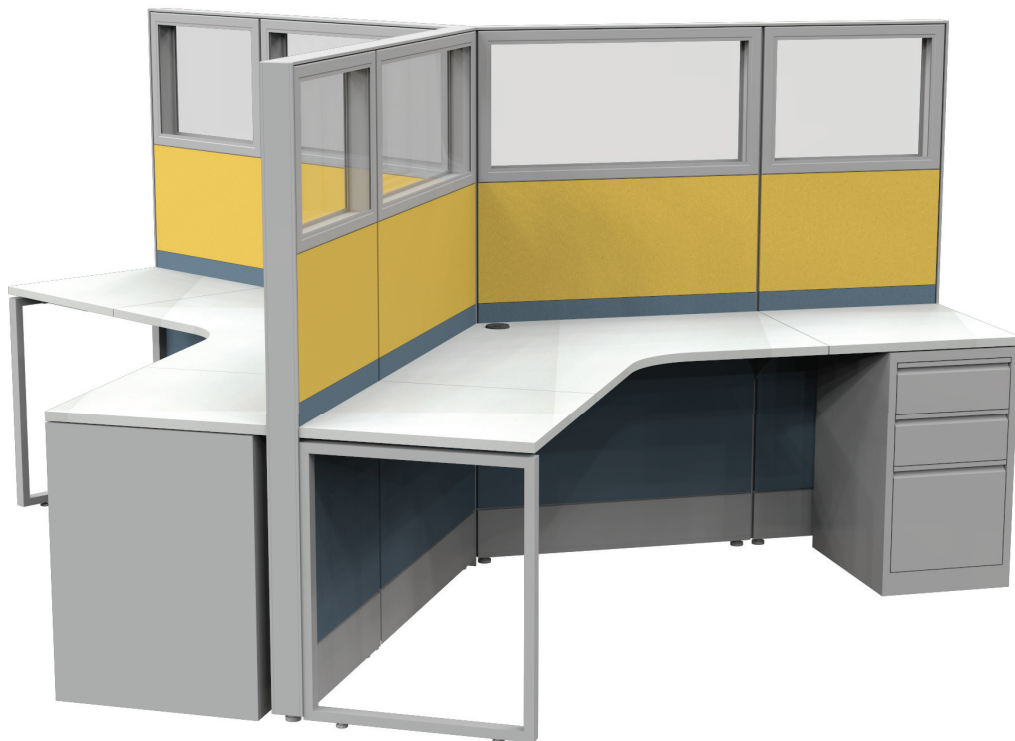


Sea Salt

Fabric Testing

Test results of how our fabric quality holds up under certain conditions.

Test item	Test Standard	Unit	Test Result	
			Small Pear	
Color Fastness to Water	AATCC107-2002	Srain Fading	4	4
	GB/T5713-1997	Srain Fading	4	4
Color Fastness to Perspiration	AATCC15-2002	Srain Fading	4	4
	GB/T3922-1997	Srain Fading	4-5	4-5
Color Fastness to Washing	ISO 105-C03:1989	Srain Fading	4-5	4-5
	GB/T3921.3-1997	Srain Fading	4-5	4-5
Color Fastness to Light	ISO 105-B02:1997	Xenon-Lamp	5	
	GB/T8427-1998	Xenon-Lamp	5	
Color Fastness to Rubbing	AATCC8:2001	Dry Wet	4-5	4-5
	GB/T 3920-1997	Dry Wet	4-5	4-5
Tear Strength	ASTM D2261	Wrap Filling	12.5	10.3
	GB/T3917.2-1997	Wrap Filling	11	8.5
Seam Slippage Strength	ASTM D434	Wrap Filling	17.5	22
	GB/T 13772.1-1992	Wrap Filling	16	19.5
Seam Breaking Strength	ASTM D1683-04	Wrap Filling	31.5	26.5
	GB/T 13773-1992	Wrap Filling	45.9	47.7
Tensile Strength	ASTM D5034-1995-1	Wrap Filling	87	63
	GB/T3923.2-1997	Wrap Filling	88	65
Burst Strength	ASTM D3787	cm ²	117.9	
Abrasion Resistance	ASTM D4966-98 Martindale 12Kpa		over 30,000	
Flammability Test Required	California Technical Bulletin 117 Section E, Part I (CS191-53)		Pass	
	BS 5852 Part I: 1979, Match Test		Pass	



Optional Acoustic Installation

Choose to add additional acoustic to your system using this rockboard. Below are the test results of its performance.

ROCKBOARD® 40 – Acoustical Performance

ASTM C 423 CO-EFFICIENTS AT FREQUENCIES							
Thickness	125 Hz	250 Hz	500 Hz	1000 Hz	2000 Hz	4000 Hz	NRC
1.0"	0.07	0.32	0.77	1.04	1.05	1.05	0.80
2.0"	0.26	0.68	1.12	1.10	1.03	1.04	1.00
4.0"	1.03	1.07	1.12	1.04	1.07	1.08	1.10

ROCKBOARD® 60 – Acoustical Performance

ASTM C 423 CO-EFFICIENTS AT FREQUENCIES							
Thickness	125 Hz	250 Hz	500 Hz	1000 Hz	2000 Hz	4000 Hz	NRC
1.0"	0.08	0.33	0.78	1.03	1.02	1.04	0.80
2.0"	0.32	0.81	1.06	1.02	0.99	1.04	0.95

ROCKBOARD® 80 – Acoustical Performance

ASTM C 423 CO-EFFICIENTS AT FREQUENCIES							
Thickness	125 Hz	250 Hz	500 Hz	1000 Hz	2000 Hz	4000 Hz	NRC
1.0"	0.11	0.31	0.82	1.01	1.02	1.01	0.80
2.0"	0.43	0.78	0.90	0.97	0.97	1.00	0.90

Environmentally Sustainable

Our stone wool production process uses some of the most advanced technology available. The last decade has seen a new generation of ROXUL manufacturing advancements designed to lower our environmental footprint. These endeavors have included:

- the capture and recycling of rainwater;
- reduction in energy consumption;
- recycling of raw materials back into the production process;
- the use of natural lighting in our facilities; and
- repurposing water used during the manufacturing process.

Moisture Resistance

ROCKBOARD® 40/60/80 ASTM C 1104	Moisture Sorption	<0.08%
------------------------------------	-------------------	--------

Fungi Resistance

ROCKBOARD® 40/60/80 ASTM C 1338	Determination of Fungi Resistance	Passed
------------------------------------	--------------------------------------	--------

Thermal Resistance

ROCKBOARD® 40/80 ASTM C 518 [C 177]	R-value/inch @ 75 °F RSI value/25.4 mm @ 24 °C	4.1 hr.ft².F/BTU 0.72 m²K/W
ROCKBOARD® 60 ASTM C 518 [C 177]	R-value/inch @ 75 °F RSI value/25.4 mm @ 24 °C	4.2 hr.ft².F/BTU 0.72 m²K/W

Maximum Service Temperature

ROCKBOARD® 40/60/80	ASTM C 411	Hot Surface Performance In Compliance with ASTM C 612 @ 1200 °F (650 °C)
------------------------	------------	---

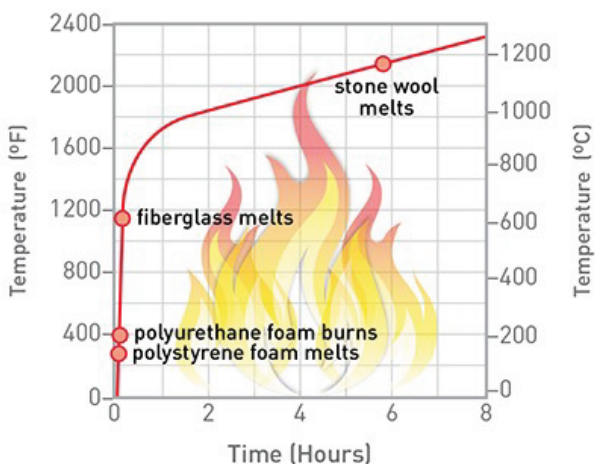
Fire Performance

ROCKBOARD® 40/60/80 CAN4 S114	Test for Non-Combustibility	Non-Combustible
----------------------------------	-----------------------------	-----------------

ROCKBOARD® 40/60/80 ASTM E 84[UL 723]	Surface Burning Characteristics	Flame Spread = 0 Smoke Developed = 0
--	------------------------------------	---

ROCKBOARD® 40/60/80 CAN/ULC S102	Surface Burning Characteristics	Flame Spread = 0 Smoke Developed = 0
-------------------------------------	------------------------------------	---

Temperature Development in a Standard Fire (ASTM E119)



Compliance and Performance

ROCKBOARD® 40 ASTM C 612	Mineral Fiber Block and Board Thermal Insulation	Type IVA, Complies
ROCKBOARD® 60/80 ASTM C 612	Mineral Fiber Block and Board Thermal Insulation	Type IVB, Complies

